



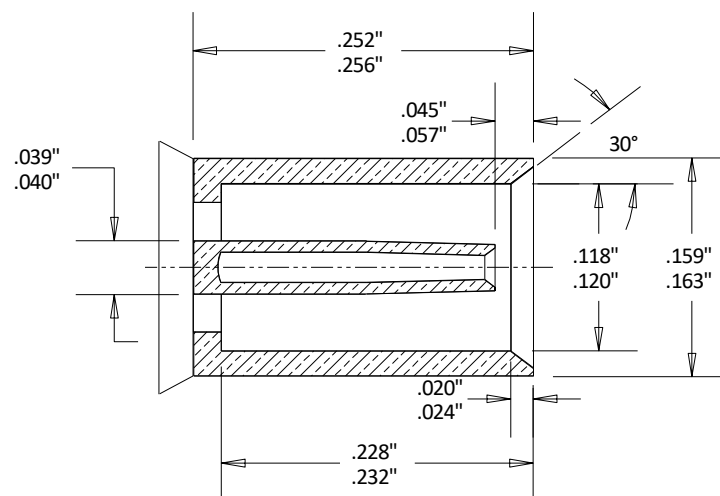
1.0/2.3 Jack Specifications

Rev 000

Electrical	
Impedance	50 Ohms
Frequency	0-10 Ghz
Voltage Rating	250 Volts Peak
Environmental	
Operating Temperature	-40°C to +155°C
Mechanical	
Mating	Slide-On Push-Pull
Durability	500 Mates/De-mates
In Compliance With	DIN 41626 & DIN 47297



Outline



Dimensional Tolerances

.X	±.030
.XX	±.010
.XXX	±.005