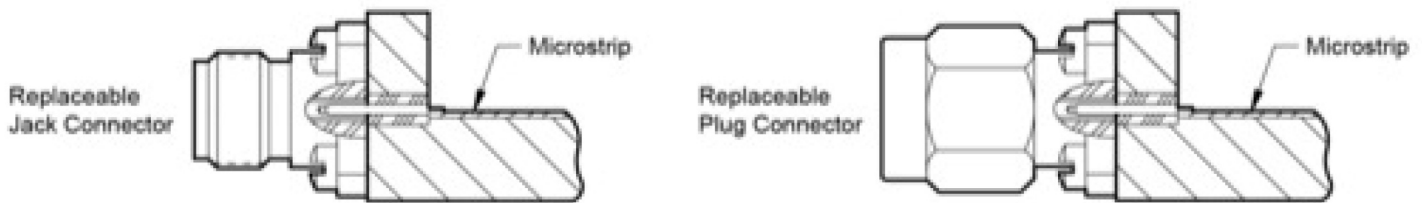


# Launch Pin Transitions to Microstrip

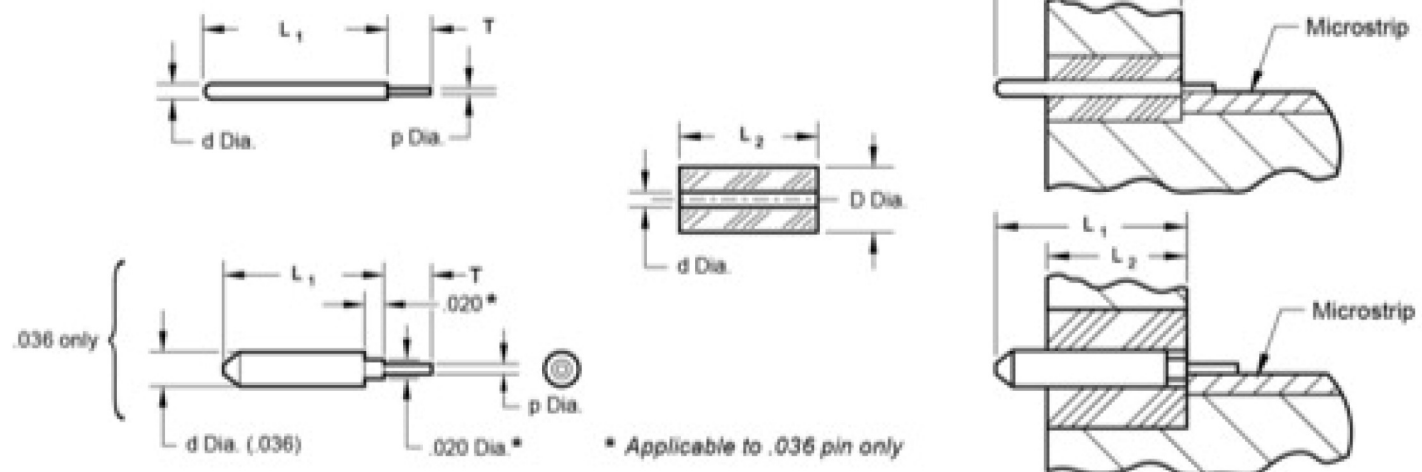
1090-11G

- d Dia.: 0.012"
- D Dia.: 0.039"
- T: 0.030"
- p Dia: 0.007"
- L<sub>1</sub>: 0.225"
- L<sub>2</sub>: 0.187"

## Launch Pin and Dielectric Transition to Microstrip



## Dielectric Transition



## Materials/Construction:

- Launch Pin: BeCu Per ASTM B196
- Plating: Gold Over Nickel Per MIL-G-45204
- Dielectric: Virgin PTFE Fluorocarbon Per ASTM D1710