



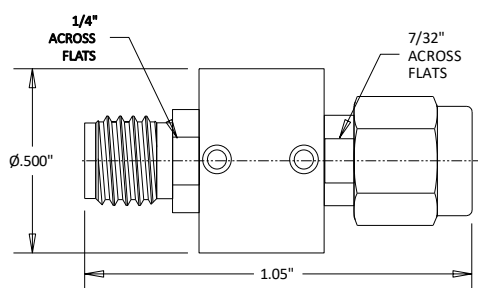
CD9515 SMA/Male to SMA/Female Outer DC Block .01 GHZ - 18 GHZ

Rev 001

Electrical	
Frequency	.01 GHZ – 18 GHZ
VSWR	1.35 Max
Impedance	50 Ohms
Voltage	200 Volts DC Max
Insertion Loss	0.5 dB Max
Mechanical	
2.92 Interface per	MIL-STD-348B
Operating Temperature	-55°C to +105°C
Materials	
Body(Connectors)	Passivated Stainless Steel
Body	PEEK
Contacts	BeCu
Contact Plating	Au Per MIL-G-45204
ROHS Compliant	



Outline



Dimensional Tolerances

.X	±.030
.XX	±.010
.XXX	±.005

Typical Data

