



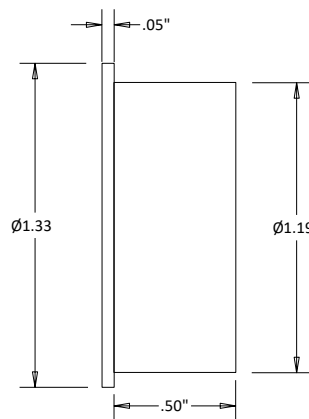
## CDM1P 7/16 Male Dust Cap for Female Connectors

Rev 000

<b>Mechanical</b>	
7/16 Interface per	IEC 60169-4
<b>Materials</b>	
Body	White Transparent Plastic
ROHS Compliant	



### Outline



#### Dimensional Tolerances

.X	±.030
.XX	±.010
.XXX	±.005